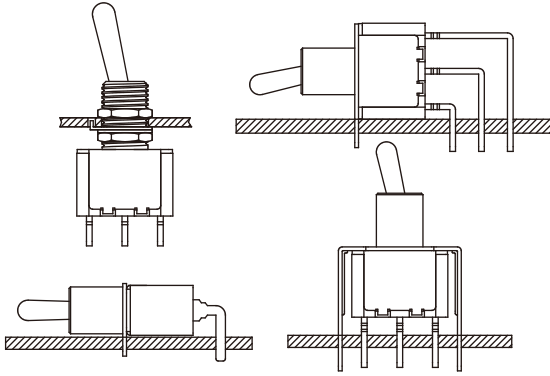


SPECIFICATIONS:

CONTACT RATING: Refer to "Contact Material Options" for more info.
 ELECTRICAL LIFE: 50,000 make-and-break cycles at full load.
 CONTACT RESISTANCE: 10mΩ max. initial @2-4VDC
 100mA for both silver and gold plated contacts.
 INSULATION RESISTANCE: 1,000MΩ min.
 DIELECTRIC STRENGTH: 1,500V RMS @ sea level.
 OPERATING TEMPERATURE: -30°C to +85°C

MATERIALS:

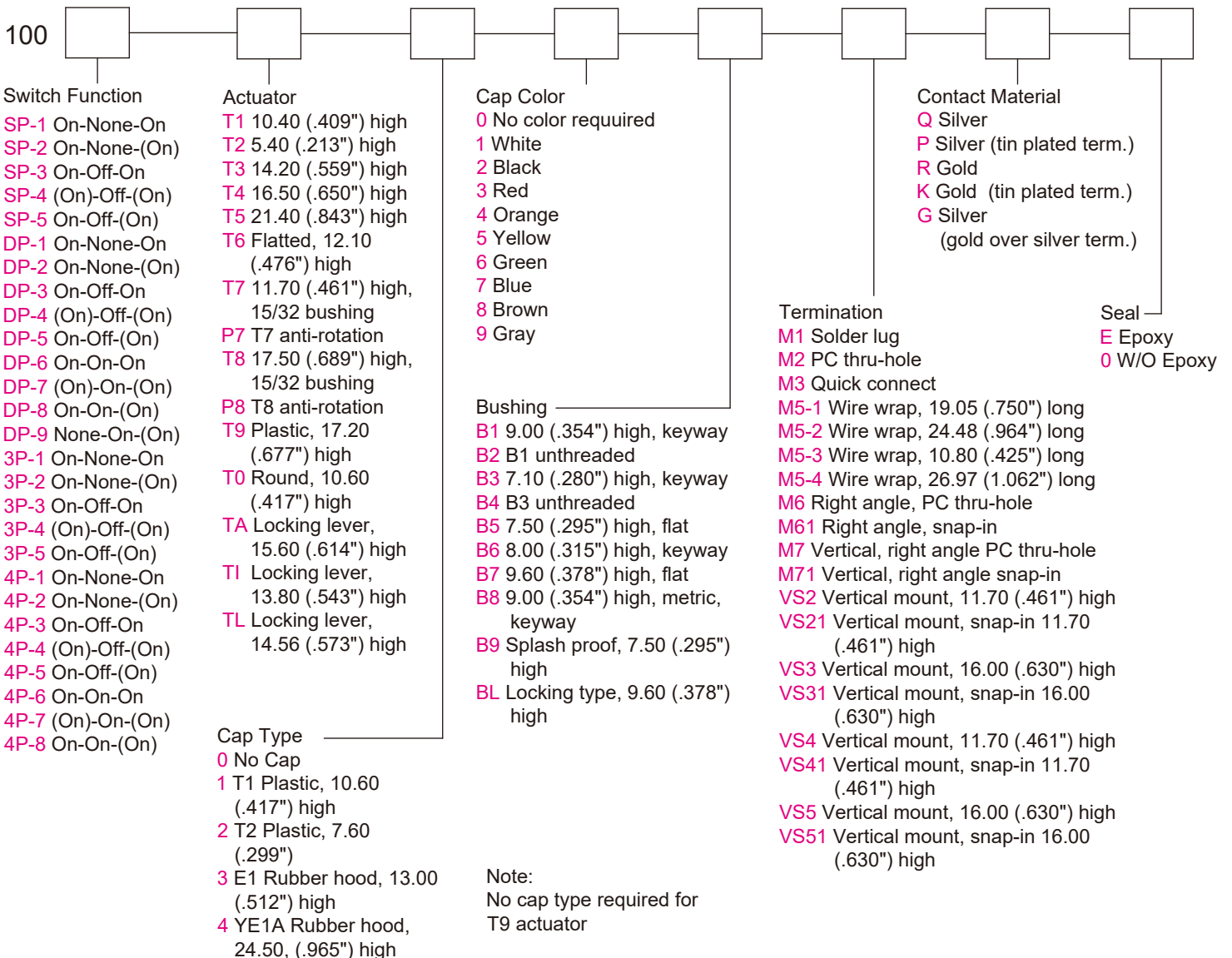
CASE: Diallyl phthalate(DAP)(UL 94V-0)
 TOGGLE HANDLE: Brass, chrome plated.
 BUSHING: Brass, nickel plated.
 HOUSING: Stainless Steel.
 TERMINAL SEAL: Epoxy.



Specifications and Dimensions subject to change

If your preferred product configuration is not shown, please contact our sales representative for custom design.

HOW TO ORDER SYSTEM



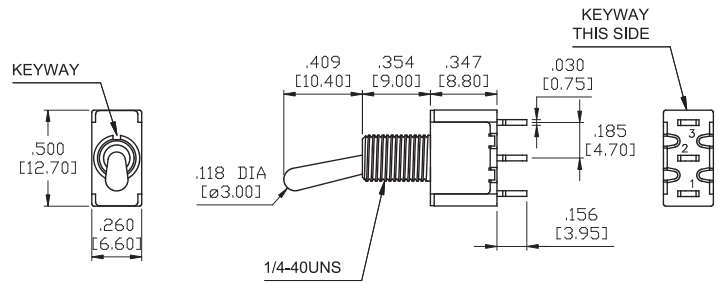
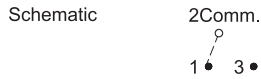
Series 100

Miniature Toggle Switches

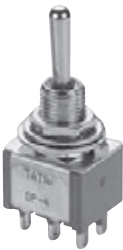
SPDT



Model No.	Switching Position		
SP-1	ON	NONE	ON
SP-2	ON	NONE	(ON)
SP-3	ON	OFF	ON
SP-4	(ON)	OFF	(ON)
SP-5	ON	OFF	(ON)
Term. Comm.	2-3	OPEN	2-1

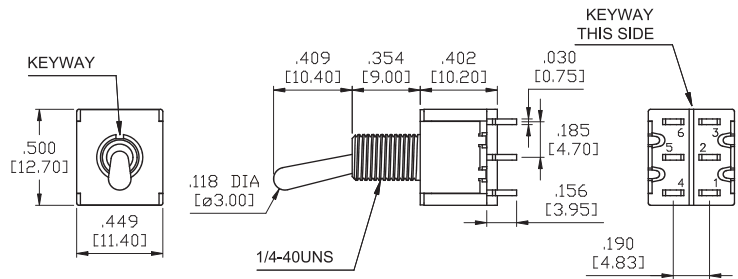


DPDT

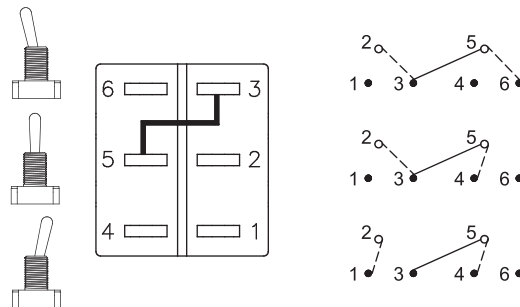


Model No.	Switching Position		
DP-1	ON	NONE	ON
DP-2	ON	NONE	(ON)
DP-3	ON	OFF	ON
DP-4	(ON)	OFF	(ON)
DP-5	ON	OFF	(ON)
Term. Comm.	2-3,5-6	OPEN	2-1,5-4

Model No.	Switching Position		
DP-6	ON	ON	ON
DP-7	(ON)	ON	(ON)
DP-8	ON	ON	(ON)
Term. Comm.	2-3,5-6	2-3,5-4	2-1,5-4



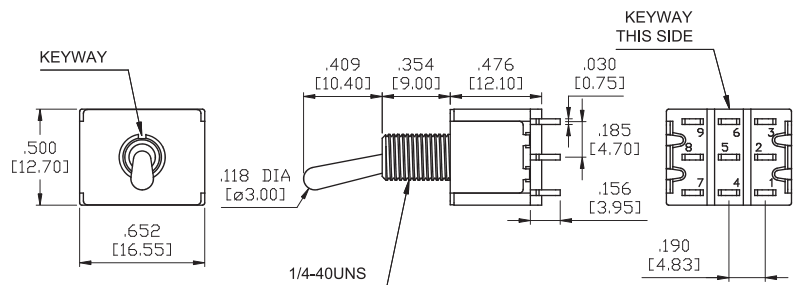
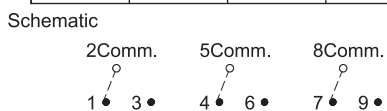
WIRING FOR ON-ON-ON (3-WAY) FUNCTION



3PDT



Model No.	Switching Position		
3P-1	ON	NONE	ON
3P-2	ON	NONE	(ON)
3P-3	ON	OFF	ON
3P-4	(ON)	OFF	(ON)
3P-5	ON	OFF	(ON)
Term. Comm.	2-3,5-6 8-9	OPEN	2-1,5-4 8-7



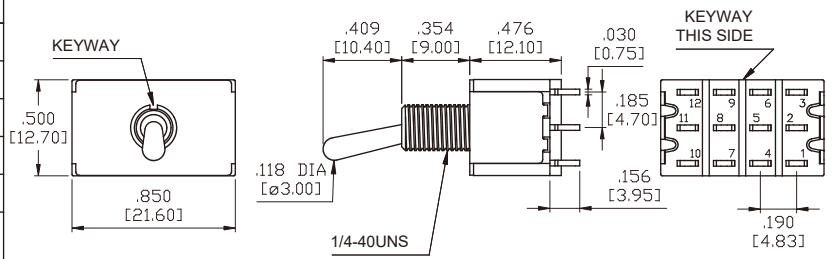
Toggle
Rocker
Slide
Pushbutton
AV
Rotary
Tact
Touch Key
Miscellaneous

4PDT



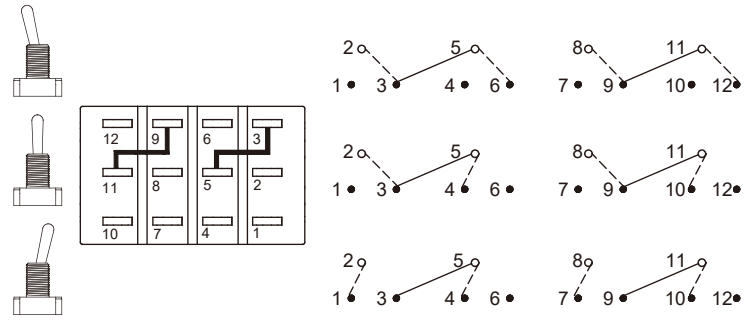
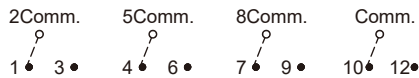
Model No.	Switching Position		
4P-1	ON	NONE	ON
4P-2	ON	NONE	(ON)
4P-3	ON	OFF	ON
4P-4	(ON)	OFF	(ON)
4P-5	ON	OFF	(ON)
Term. Comm.	2-3,5-6 8-9 11-12	OPEN	2-1,5-4 8-7 11-10

Model No.	Switching Position		
4P-6	ON	ON	ON
4P-7	(ON)	ON	(ON)
4P-8	ON	ON	(ON)
Term. Comm.	2-3,5-6 8-9 11-12	2-3,5-4 8-9 11-10	2-1,5-4 8-7 11-10



WIRING FOR ON-ON-ON (3-WAY) FUNCTION

Schematic



ACTUATOR OPTIONS

T1 	T2 	T3 	T4 	T5 																					
T6 	T7 P7 ANTI-ROTATION 	T8 P8 ANTI-ROTATION 	T9 PLASTIC 	<table border="1"> <thead> <tr> <th>NO.</th> <th>COLOR</th> </tr> </thead> <tbody> <tr><td>1</td><td>White</td></tr> <tr><td>2</td><td>Black(std.)</td></tr> <tr><td>3</td><td>Red</td></tr> <tr><td>4</td><td>Orange</td></tr> <tr><td>5</td><td>Yellow</td></tr> <tr><td>6</td><td>Green</td></tr> <tr><td>7</td><td>Blue</td></tr> <tr><td>8</td><td>Brown</td></tr> <tr><td>9</td><td>Gray</td></tr> </tbody> </table>	NO.	COLOR	1	White	2	Black(std.)	3	Red	4	Orange	5	Yellow	6	Green	7	Blue	8	Brown	9	Gray	T0
NO.	COLOR																								
1	White																								
2	Black(std.)																								
3	Red																								
4	Orange																								
5	Yellow																								
6	Green																								
7	Blue																								
8	Brown																								
9	Gray																								
LOCKING LEVER TA <p>FOR SP-1,DP-1 3P-1,4P-1 ONLY</p> <p>FOR SP-3,DP-3 3P-3,4P-3 ONLY</p>	LOCKING LEVER T1 <p>FOR SP-1,DP-1 3P-1,4P-1 ONLY</p> <p>FOR SP-3,DP-3 3P-3,4P-3 ONLY</p>	LOCKING LEVER TL <p>FOR SP-1,DP-1 3P-1,4P-1 ONLY</p> <p>FOR SP-3,DP-3 3P-3,4P-3 ONLY</p>																							

* T6 must configure with a stand-off bushing.

* For T7,P7,T8,P8 bushing code is not required.

* Actuator length shown for T1 ~ T5 and T9 ~ T0 is with B1 bushing.

BUSHING OPTIONS

<p>B1 THD B2 NON-THD</p>	<p>B3 THD B4 NON-THD</p>	<p>B5 HIGH TORQUE</p>	<p>B6 HIGH TORQUE</p>
<p>B7 LONG</p>	<p>B8 METRIC</p>	<p>B9 SPLASH-PROOF</p>	<p>BL LOCKING LEVER</p>
<p>BA THD For T6</p>	<p>BB NON-THD For T6</p>	<p>BE HIGH TORQUE For T6</p>	

PANEL MOUNTING

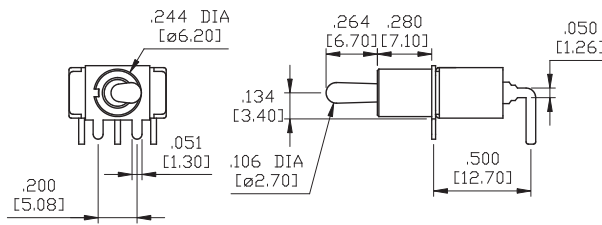
<p>1/4 INCH BUSHING</p>	<p>15/32 INCH BUSHING</p>
--------------------------------	----------------------------------

TERMINATION OPTIONS

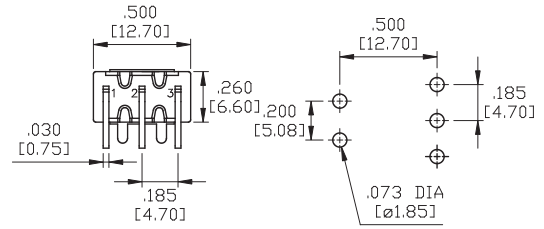
<p>M1 STD. SOLDER LUG</p>	<p>M2 PC THRU-HOLE</p>	<p>M3 QUICK CONNECT</p>	<p>M5 WIRE WRAP</p> <table border="1" data-bbox="1273 1755 1516 1989"> <thead> <tr> <th>OPTION CODE</th> <th>DIM.'A'</th> </tr> </thead> <tbody> <tr> <td>M5-1</td> <td>.750 [19.05]</td> </tr> <tr> <td>M5-2</td> <td>.964 [24.48]</td> </tr> <tr> <td>M5-3</td> <td>.425 [10.80]</td> </tr> <tr> <td>M5-4</td> <td>1.062 [26.97]</td> </tr> </tbody> </table>	OPTION CODE	DIM.'A'	M5-1	.750 [19.05]	M5-2	.964 [24.48]	M5-3	.425 [10.80]	M5-4	1.062 [26.97]
OPTION CODE	DIM.'A'												
M5-1	.750 [19.05]												
M5-2	.964 [24.48]												
M5-3	.425 [10.80]												
M5-4	1.062 [26.97]												

TERMINATION OPTIONS

M6

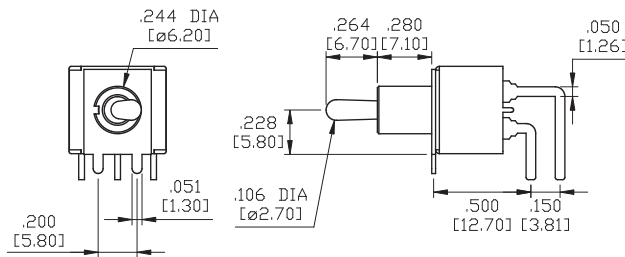
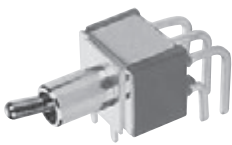


P.C.MOUNTING

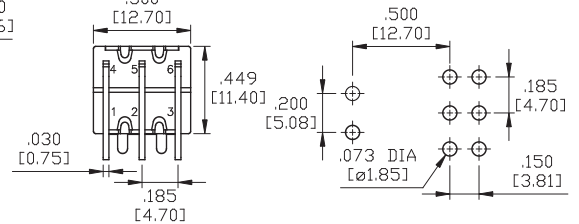


SPDT

M6

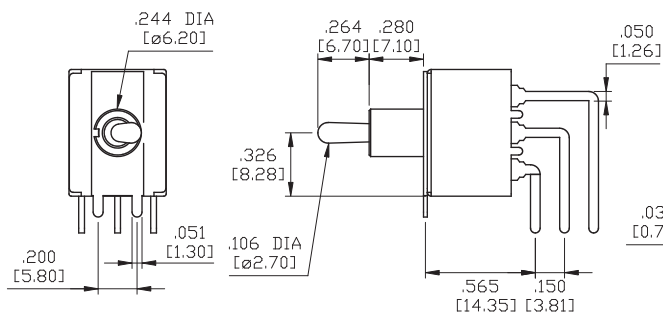
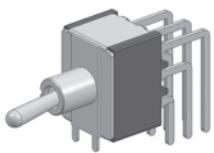


P.C.MOUNTING

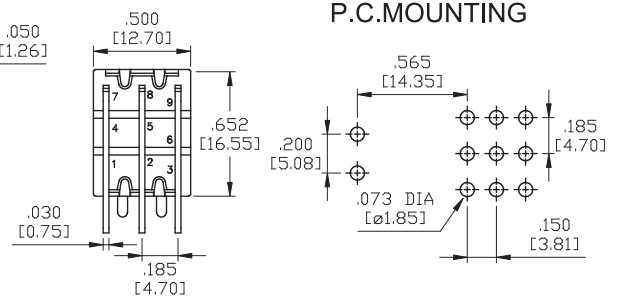


DPDT

M6

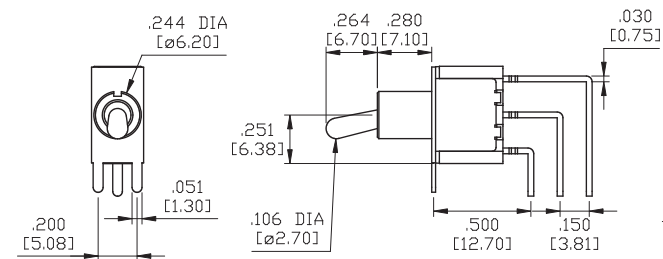
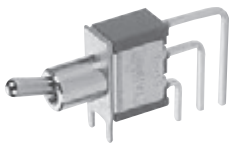


P.C.MOUNTING

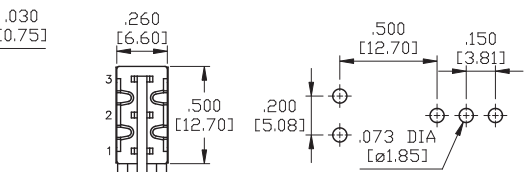


3PDT

M7

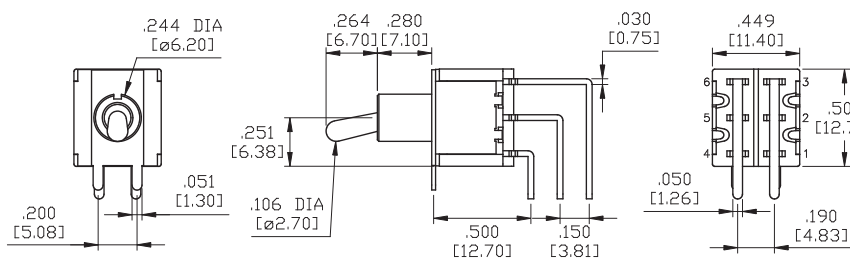
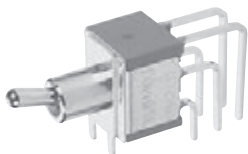


P.C.MOUNTING

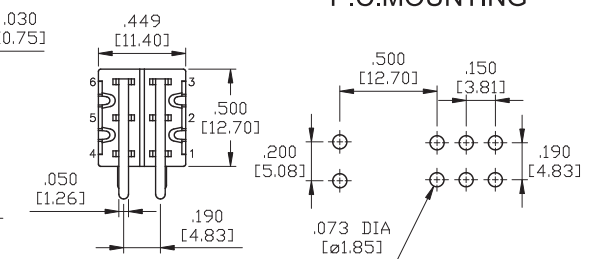


SPDT

M7



P.C.MOUNTING



DPDT

Toggle

Rocker

Slide

Pushbutton

AV

Rotary

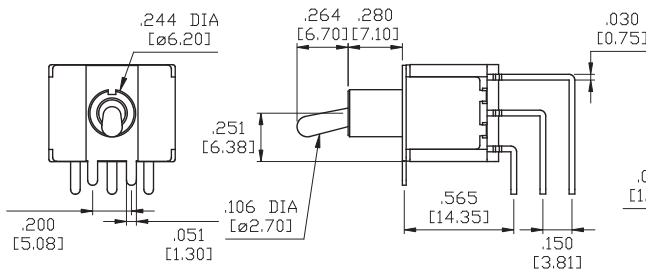
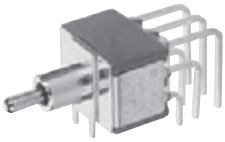
Tact

Touch Key

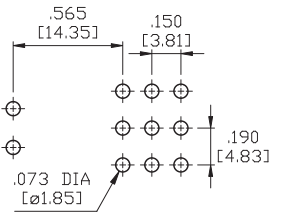
Miscellaneous

TERMINATION OPTIONS

M7

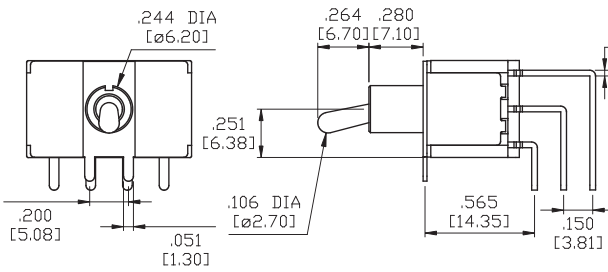
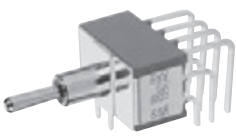


P.C.MOUNTING

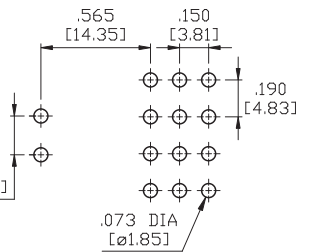


3PDT

M7

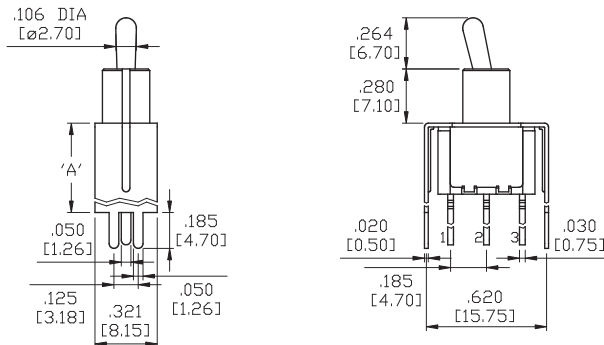
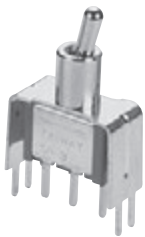


P.C.MOUNTING

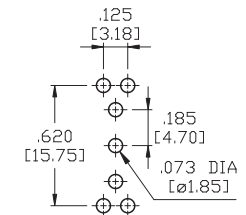


4PDT

VS2-VS3



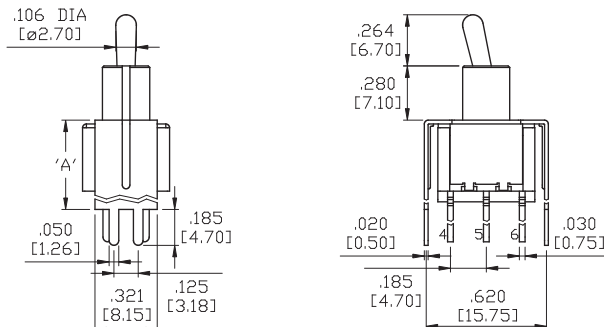
P.C.MOUNTING



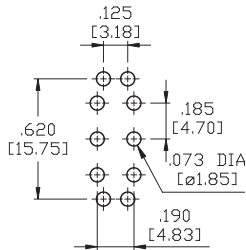
SPDT

OPTION CODE	DIM.'A'
VS2	.461 [11.70]
VS3	.630 [16.00]

VS2-VS3



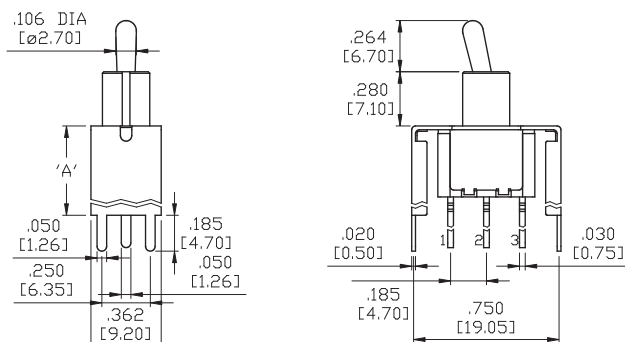
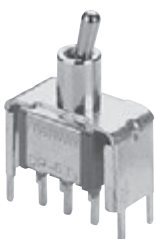
P.C.MOUNTING



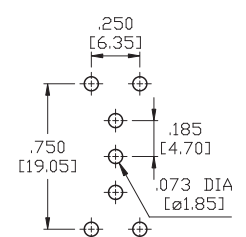
DPDT

OPTION CODE	DIM.'A'
VS2	.461 [11.70]
VS3	.630 [16.00]

VS4-VS5



P.C.MOUNTING

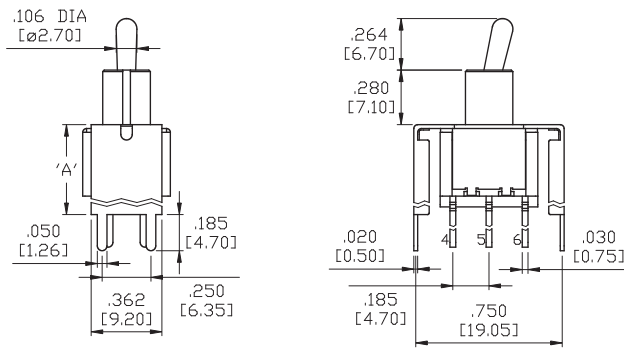


SPDT

OPTION CODE	DIM.'A'
VS4	.461 [11.70]
VS5	.630 [16.00]

TERMINATION OPTIONS

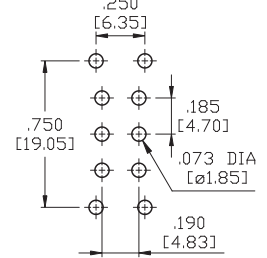
VS4-VS5



DPDT

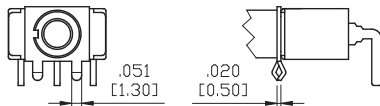
OPTION CODE	DIM.'A'
VS4	.461 [11.70]
VS5	.630 [16.00]

P.C.MOUNTING

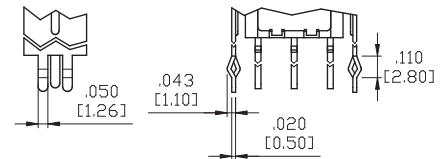


SNAP-IN TERMINATION OPTIONS

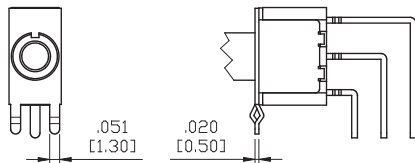
M61 (AVAILABLE WITH SPDT AND DPDT)



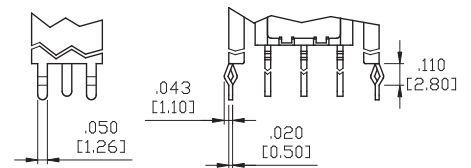
VS21,VS31



M71 (AVAILABLE WITH SPDT AND DPDT)



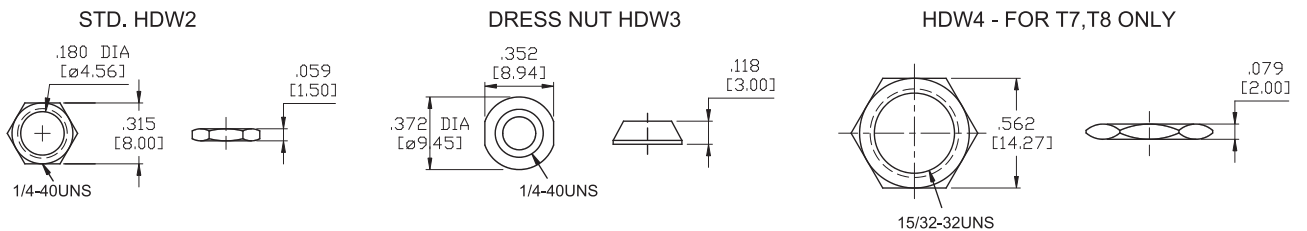
VS41,VS51



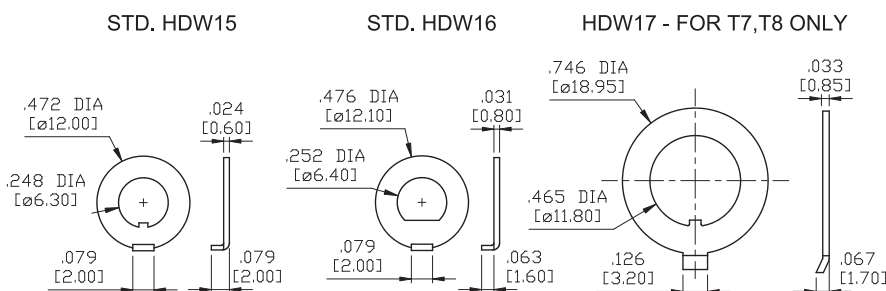
* PC Mounting for M61,M71,VS21,VS31,VS41,VS51 refer to M6,M7,VS2,VS3,VS4,VS5 respectively.

HARDWARE

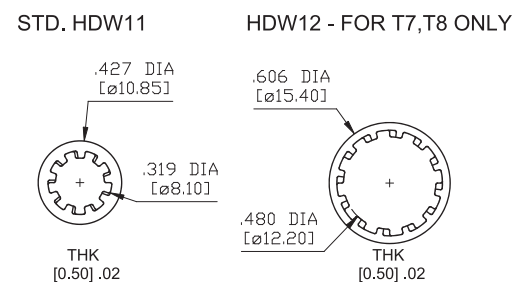
NUT



LOCKING RING



LOCK WASHER



Toggle

Rocker

Slide

Pushbutton

AV

Rotary

Tact

Touch Key

Miscellaneous

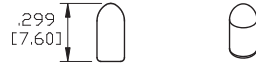
TOGGLE CAPS

T1 ACTUATOR CAP



* MATERIAL: PVC.

T2 ACTUATOR CAP



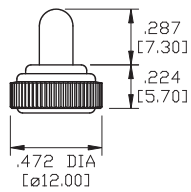
* MATERIAL: PVC.

T9 ACTUATOR GLOSS PLASTIC



* MATERIAL: ABS.

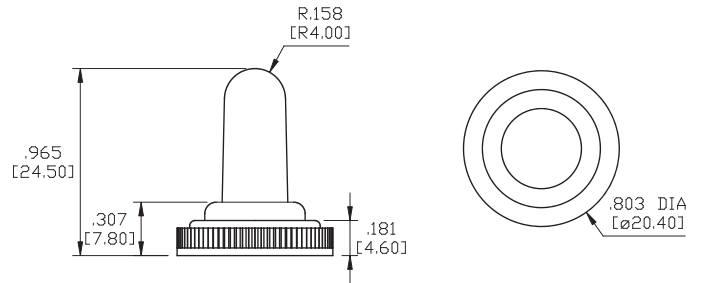
E1 RUBBER HOOD



E1=INCH (STD.)
E1A=INCH WITH INTERNAL-ORING SEALED
K1=METRIC M6P0.75 THD (For B8 bushing only)

* FOR T1 ACTUATOR ONLY.

YE1A06 M12xP0.75 RUBBER HOOD



* FOR T8 ACTUATOR ONLY.

CONTACT MATERIAL OPTIONS

Coding	Contact Material	Terminal Plating	Rating	Agency Approvals
Q	Silver ¹	Silver plated ¹	5Amps @ 125VAC or 28VDC 2Amps @ 250VAC	
P		Tin plated ⁵ ⁷		
R	Gold ²	Gold plated ⁴	0.4VA max @ 20V max (AC or DC)	
K		Tin plated ⁵ ⁶		
G	Silver ¹	Gold over silver ³	5Amps @ 125VAC or 28VDC 2Amps @ 250VAC	

1. Movable Contact / Terminals: Copper alloy, silver plated.
2. Movable Contact: Copper alloy with gold plated over nickel plated.
3. Terminals: Silver plated with outer layer in gold plating.
4. Terminals: Copper alloy, with gold plated over nickel plated.
5. Outer Terminals: Copper alloy with pure tin plated.
6. Terminal Contact: Gold plated over nickel plated.
7. Terminal Contact: Palladium nickel alloy (or Silver) plated.

* P, K not available with M1 and M3 terminals

* 6Amps (Movable Contact: coin silver, silver plated) available to model ON-NONE-ON without UL approval