

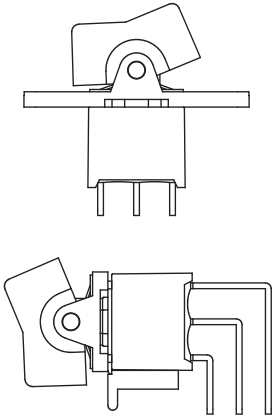
Series 300A/C (Sealed) Miniature Rocker & Paddle Switches

SPECIFICATIONS:

CONTACT RATING: Refer to "Contact Material Options" for more info.
 ELECTRICAL LIFE: 50,000 make-and-break cycles at full load.
 CONTACT RESISTANCE: 10mΩ max. initial @2-4VDC.
 100mA, for both silver and gold plated contacts.
 INSULATION RESISTANCE: 1,000MΩ min.
 DIELECTRIC STRENGTH: 1500V RMS @ sea level.
 OPERATING TEMPERATURE: -30°C to +85°C.

MATERIALS:

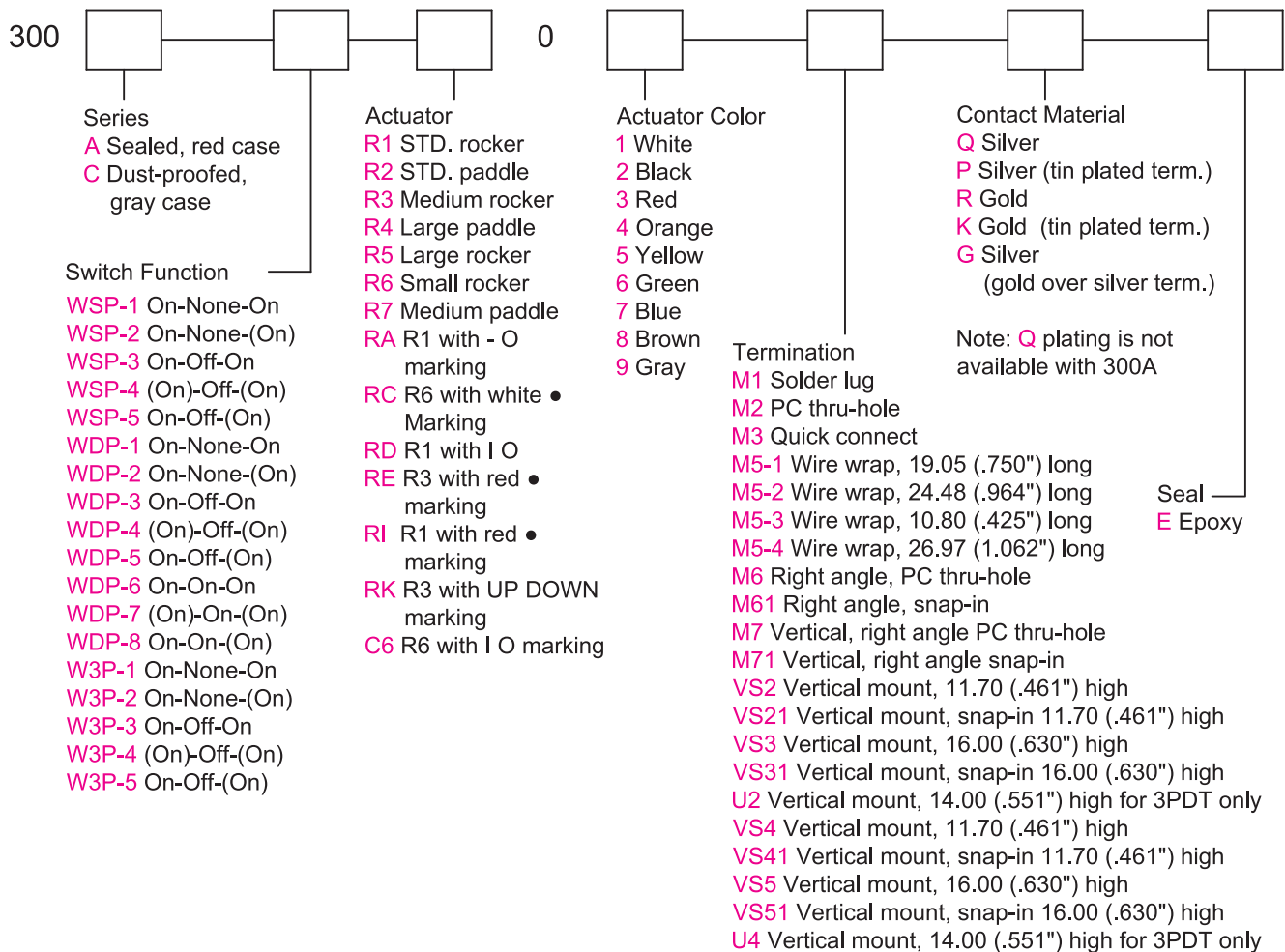
CASE & BUSHING: PA9T or FR52, flame retardant, heat stabilized (UL 94V-0).
 ACTUATOR: Nylon, black std, internal o-ring sealed (300A).
 ACTUATOR: Nylon, black std (300C).
 PANEL REAR MOUNT: Nylon, black std.
 SWITCH SUPPORT: Brass, tin plated.
 ACTUATOR PIVOT & MOUNTING BRACKET: Nylon, black std.
 ACTUATOR PIVOT RETAINER: Stainless steel.
 TERMINAL SEAL: Epoxy.



Specifications and Dimensions subject to change

If your preferred product configuration is not shown, please contact our sales representative for custom design.

HOW TO ORDER SYSTEM



Toggle

Rocker

Slide

Pushbutton

AV

Rotary

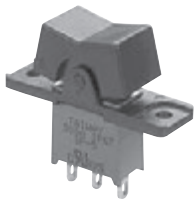
Tact

Touch Key

Miscellaneous

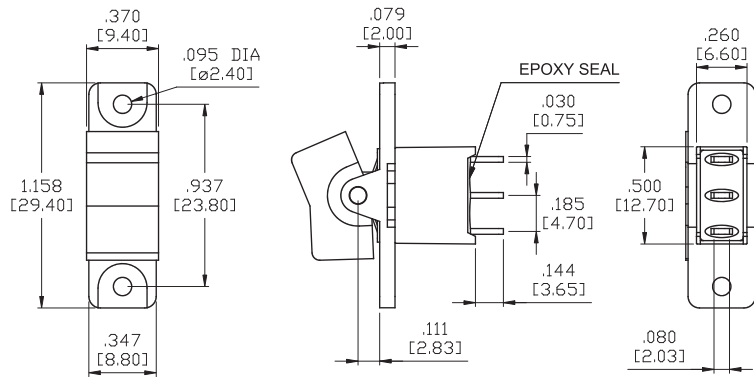
Series 300A/C (Sealed) Miniature Rocker & Paddle Switches

SPDT

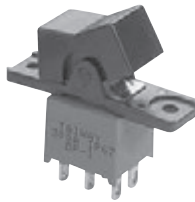


Model No.	Switching Position		
WSP-1	ON	NONE	ON
WSP-2	ON	NONE	(ON)
WSP-3	ON	OFF	ON
WSP-4	(ON)	OFF	(ON)
WSP-5	ON	OFF	(ON)
Term. Comm.	2-3	OPEN	2-1

Schematic

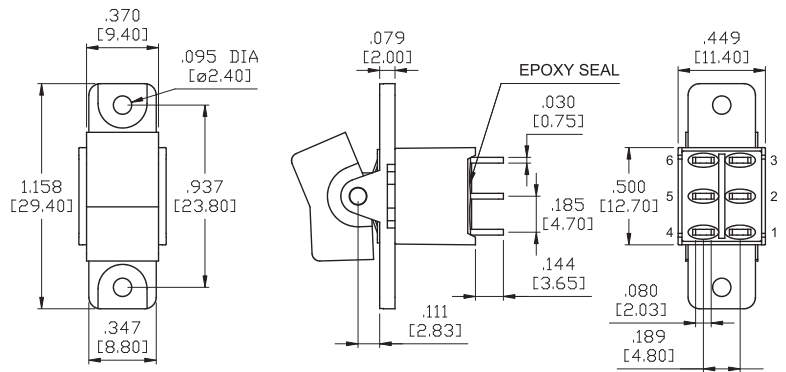
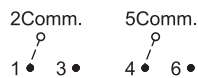


DPDT

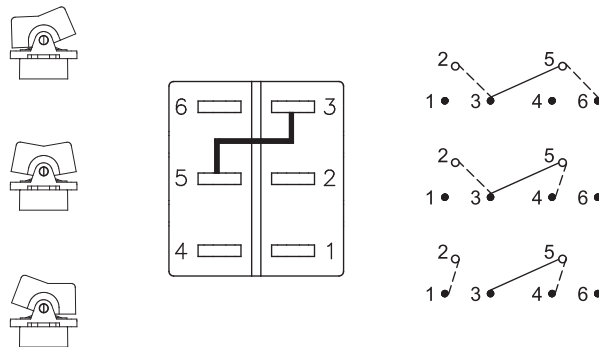


Model No.	Switching Position		
WDP-1	ON	NONE	ON
WDP-2	ON	NONE	(ON)
WDP-3	ON	OFF	ON
WDP-4	(ON)	OFF	(ON)
WDP-5	ON	OFF	(ON)
Term. Comm.	2-3,5-6	OPEN	2-1,5-4

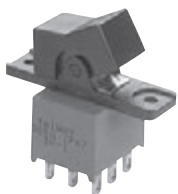
Schematic



WIRING FOR ON-ON-ON (3-WAY) FUNCTION

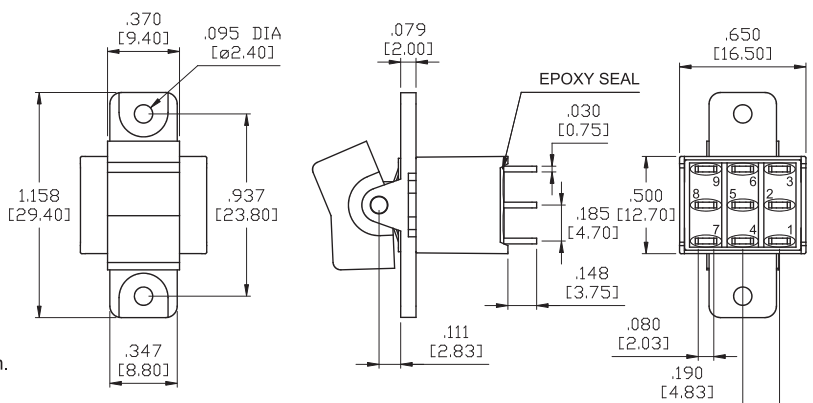


3PDT



Model No.	Switching Position		
W3P-1	ON	NONE	ON
W3P-2	ON	NONE	(ON)
W3P-3	ON	OFF	ON
W3P-4	(ON)	OFF	(ON)
W3P-5	ON	OFF	(ON)
Term. Comm.	2-3,5-6 8-9	OPEN	2-1,5-4 8-7

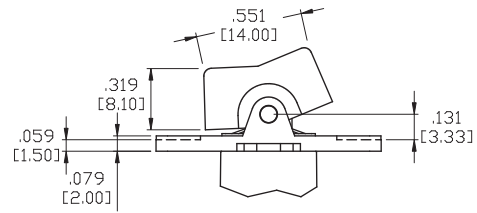
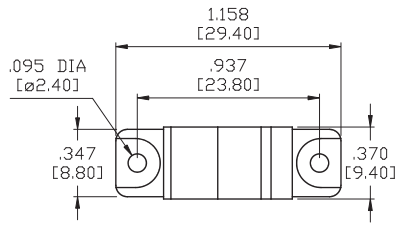
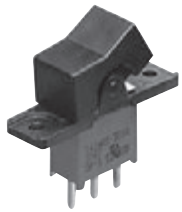
Schematic



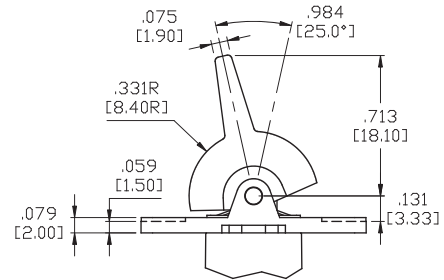
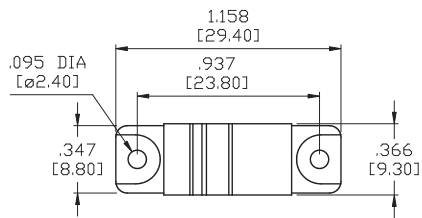
Series 300A/C (Sealed) Miniature Rocker & Paddle Switches

ACTUATOR OPTIONS FOR PANEL REAR MOUNT

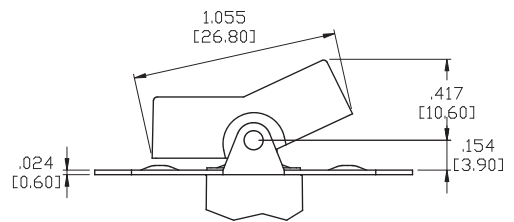
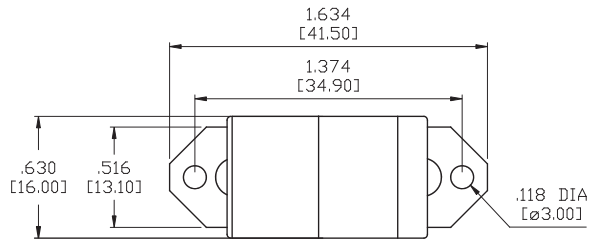
R1



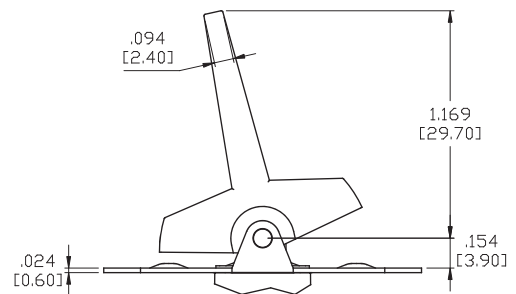
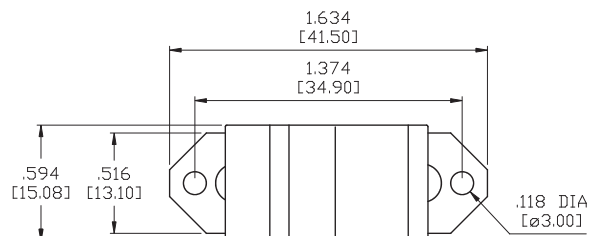
R2



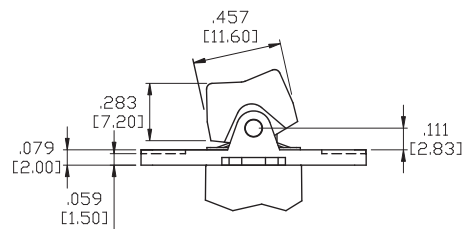
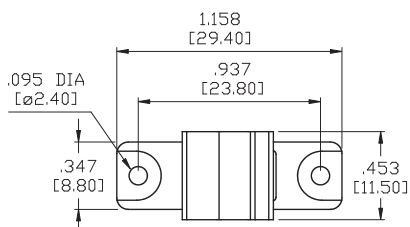
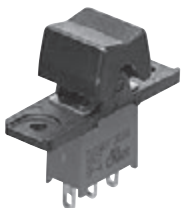
R3



R4



R6



Toggle

Rocker

Slide

Pushbutton

AV

Rotary

Tact

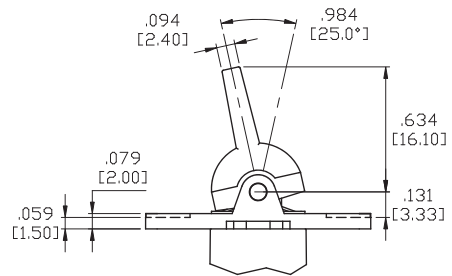
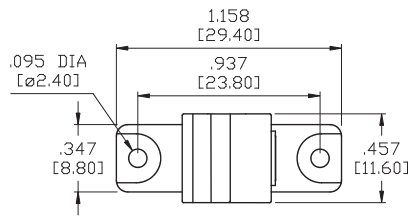
Touch Key

Miscellaneous

Series 300A/C (Sealed) Miniature Rocker & Paddle Switches

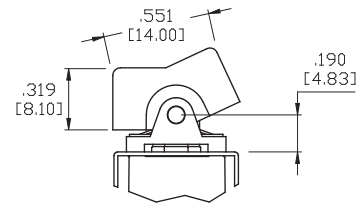
ACTUATOR OPTIONS FOR PANEL REAR MOUNT

R7

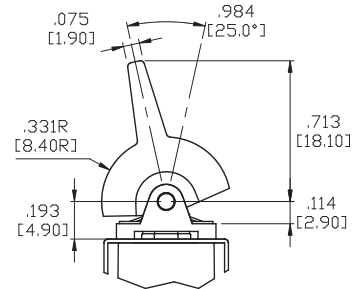


ACTUATOR OPTIONS FOR P.C MOUNT

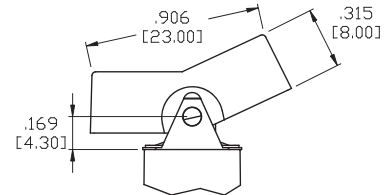
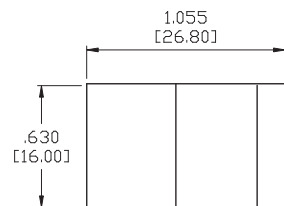
R1



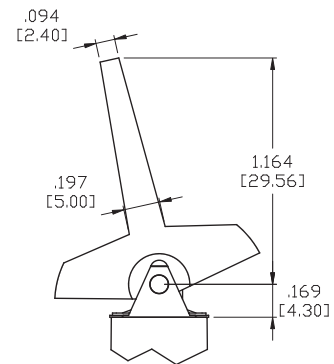
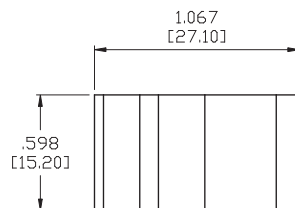
R2



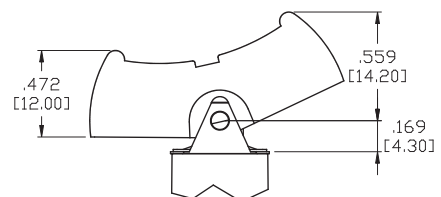
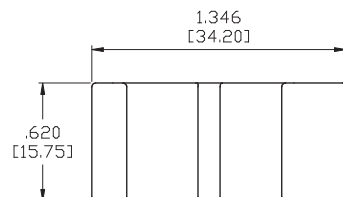
R3



R4



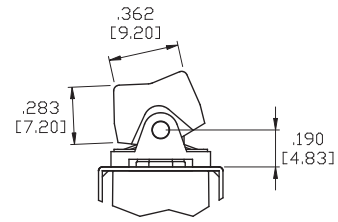
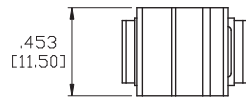
R5



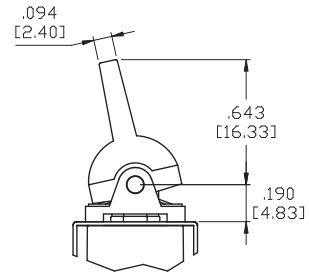
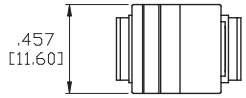
Series 300A/C (Sealed) Miniature Rocker & Paddle Switches

ACTUATOR OPTIONS FOR P.C MOUNT

R6

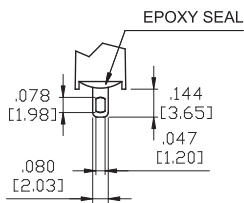


R7



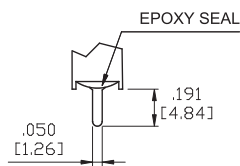
TERMINATION OPTIONS

M1 STD. SOLDER LUG



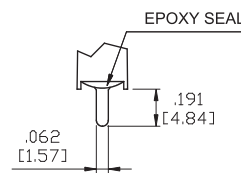
THK .030 [0.75]

M2 PC THRU-HOLE



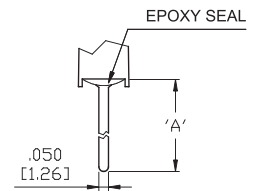
THK .030 [0.75]

M3 QUICK CONNECT



THK .030 [0.75]

M5 WIRE WRAP



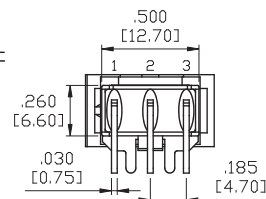
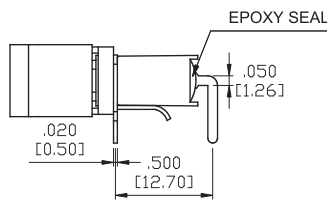
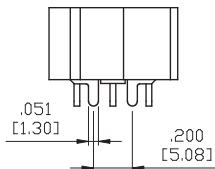
THK .030 [0.75]

OPTION CODE	DIM.'A'
M5-1	.711 [18.05]
M5-2	.924 [23.48]
M5-3	.386 [9.80]
M5-4	1.022 [25.97]

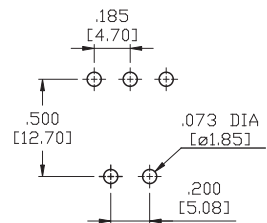
M6



SPDT



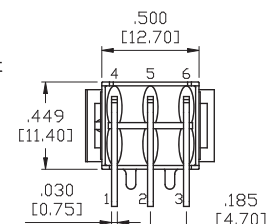
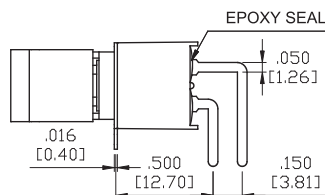
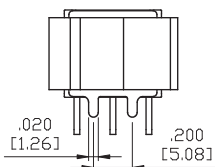
P.C.MOUNTING



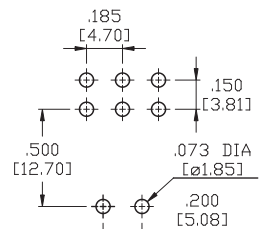
M6



DPDT



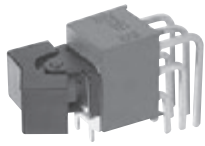
P.C.MOUNTING



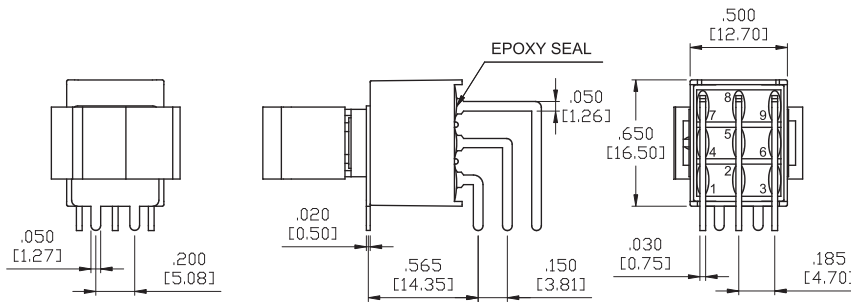
Series 300A/C (Sealed) Miniature Rocker & Paddle Switches

TERMINATION OPTIONS

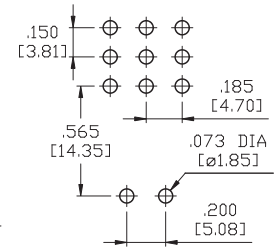
M6



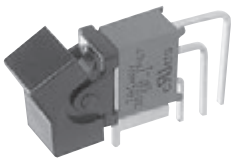
3PDT



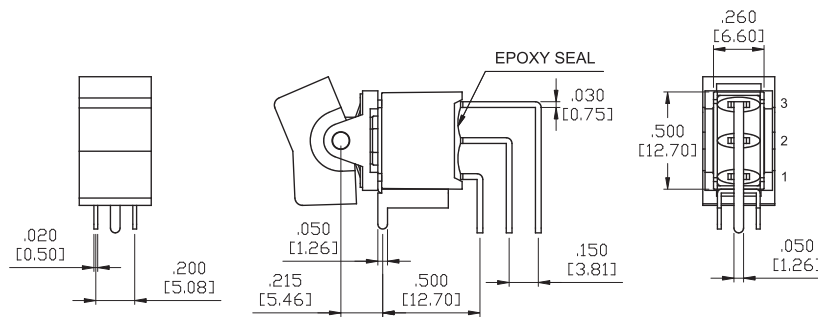
P.C.MOUNTING



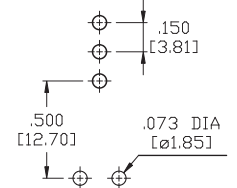
M7



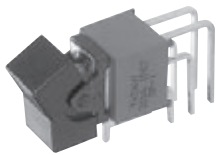
SPDT



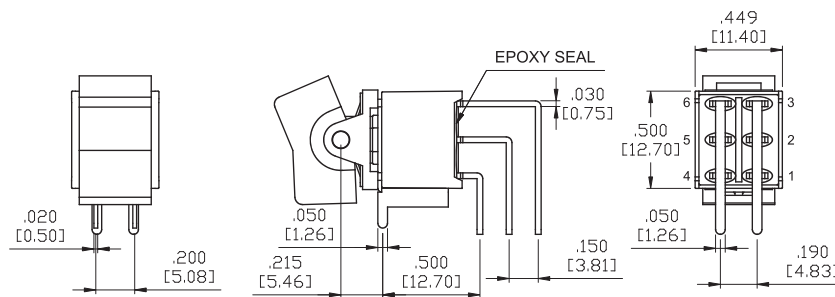
P.C.MOUNTING



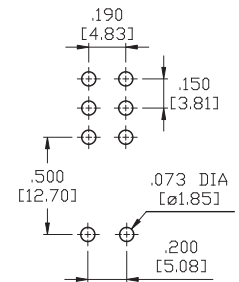
M7



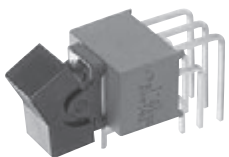
DPDT



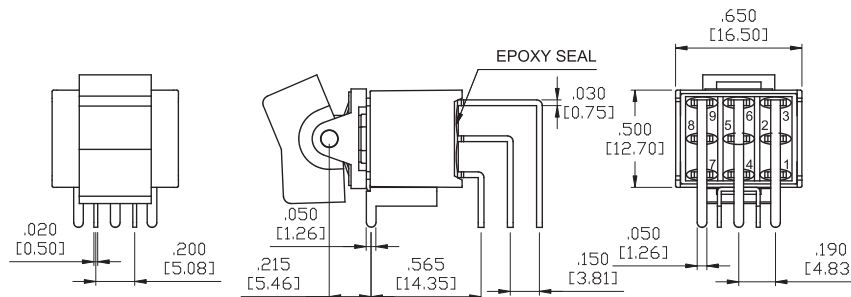
P.C.MOUNTING



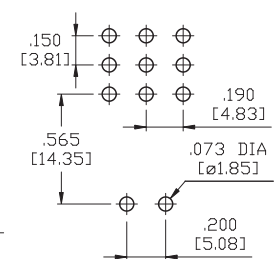
M7



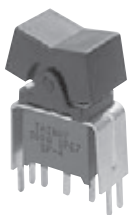
3PDT



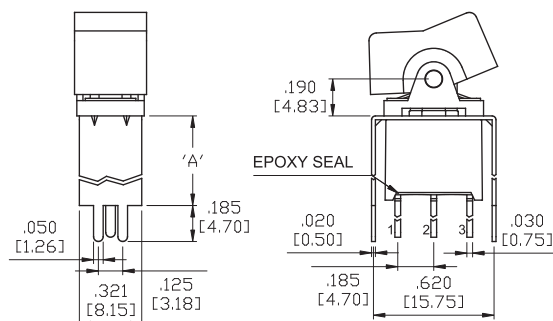
P.C.MOUNTING



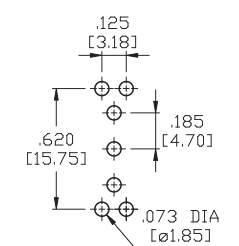
VS2-VS3



SPDT



P.C.MOUNTING



OPTION CODE	DIM.'A'
VS2	.461 [11.70]
VS3	.630 [16.00]

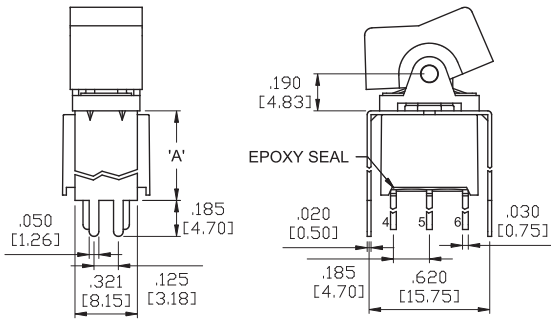
Series 300A/C (Sealed) Miniature Rocker & Paddle Switches

TERMINATION OPTIONS

VS2-VS3

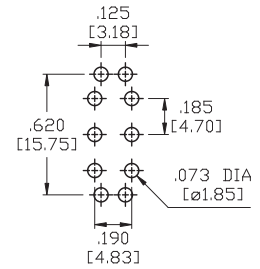


DPDT



OPTION CODE	DIM.'A'
VS2	.461 [11.70]
VS3	.630 [16.00]

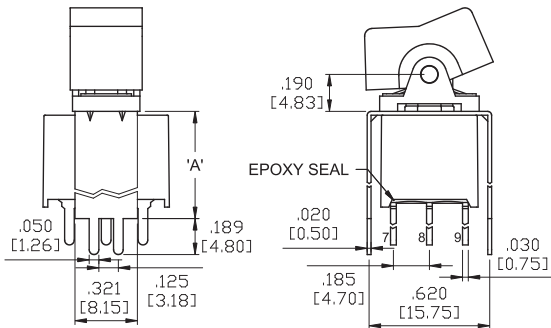
P.C.MOUNTING



U2-VS3

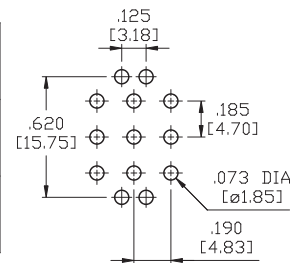


3PDT



OPTION CODE	DIM.'A'
U2	.551 [14.00]
VS3	.630 [16.00]

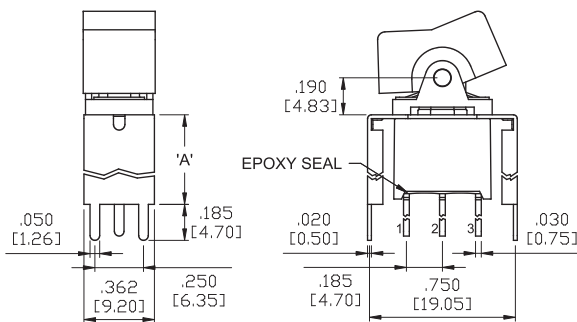
P.C.MOUNTING



VS4-VS5

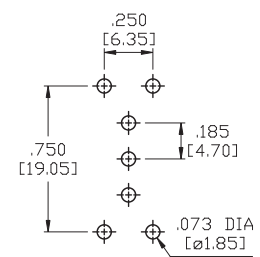


SPDT



OPTION CODE	DIM.'A'
VS4	.461 [11.70]
VS5	.630 [16.00]

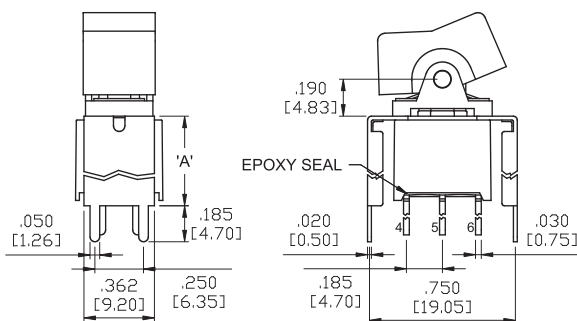
P.C.MOUNTING



VS4-VS5

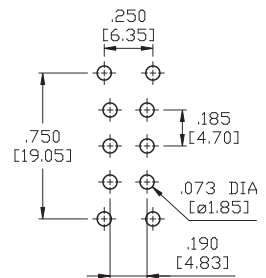


DPDT



OPTION CODE	DIM.'A'
VS4	.461 [11.70]
VS5	.630 [16.00]

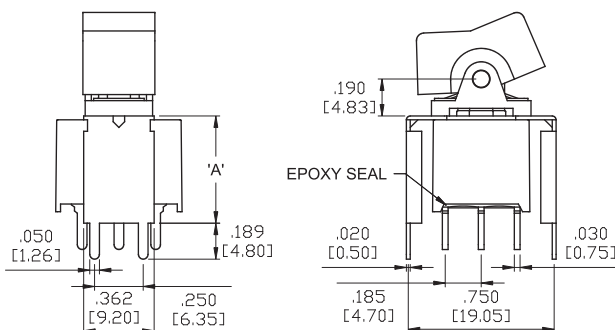
P.C.MOUNTING



U4-VS5

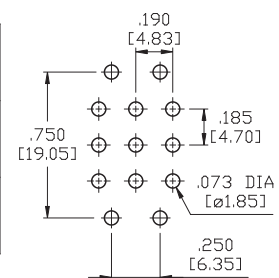


3PDT



OPTION CODE	DIM.'A'
U4	.551 [14.00]
VS5	.630 [16.00]

P.C.MOUNTING



Toggle

Rocker

Slide

Pushbutton

AV

Rotary

Tact

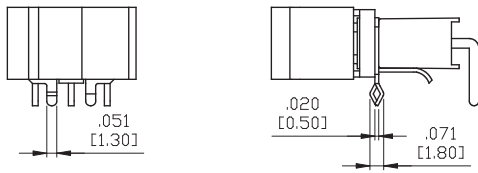
Touch Key

Miscellaneous

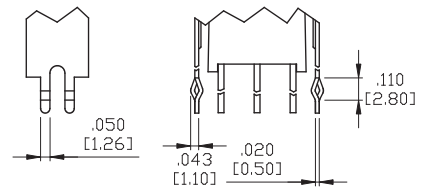
Series 300A/C (Sealed) Miniature Rocker & Paddle Switches

SNAP-IN TERMINATION OPTIONS

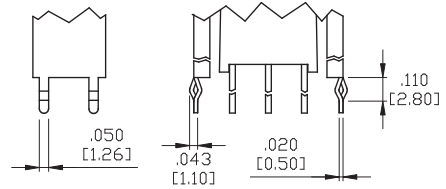
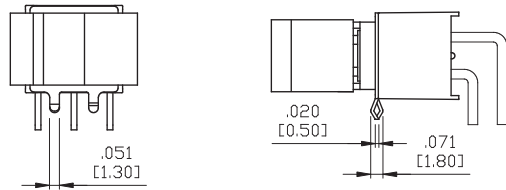
M61



VS21,VS31




VS41,VS51



* PC Mounting for M61,M71,VS21,VS31,VS41,VS51 refer to M6,M7,VS2,VS3,VS4,VS5 respectively.

CONTACT MATERIAL OPTIONS

Coding	Contact Material	Terminal Plating	Rating	Agency Approvals
G	Silver ¹	Gold over silver ³	5Amps @ 125VAC or 28VDC 2Amps @ 250VAC	 IP67
P		Tin plated ⁵ / ₇		
R	Gold ²	Gold plated ⁴	0.4VA max @ 20V max (AC or DC)	IP67
K		Tin plated ⁵ / ₆		

* Standard G plating for sealed product.

1. Movable Contact: Copper alloy, silver plated.
2. Movable Contact: Copper alloy with gold plated over nickel plated.
3. Terminals: Silver plated with outer layer in gold plating.
4. Terminals: Copper alloy, with gold plated over nickel plated.
5. Outer Terminals: Copper alloy with pure tin plated.
6. Terminal Contact: Gold plated over nickel plated.
7. Terminal Contact: Palladium nickel alloy (or Silver) plated.

* P, K not available with M1 and M3 terminals

* 6Amps (Movable Contact: coin silver, silver plated) available to model ON-NONE-ON without UL approval

* IP67 protection for 300A series only