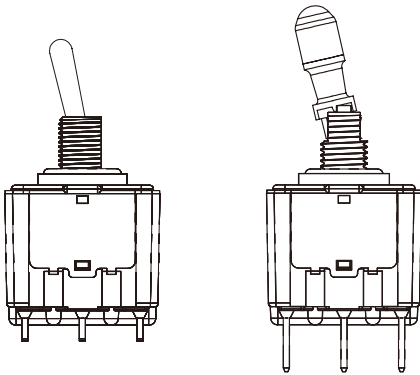


61058 Approved



SPECIFICATIONS:

CONTACT RATING: Refer to "Contact Material Options" for more info.  
 ELECTRICAL LIFE: 100,000 make-and-break cycles at full load.  
 CONTACT RESISTANCE: 10mΩ max. initial.  
 INSULATION RESISTANCE: 1,000MΩ min. @ 500VDC.  
 DIELECTRIC STRENGTH: 2,000V RMS @ sea level.  
 OPERATING TEMPERATURE: -30°C TO +85°C.  
 IP67 FRONT PANEL PROTECTION.

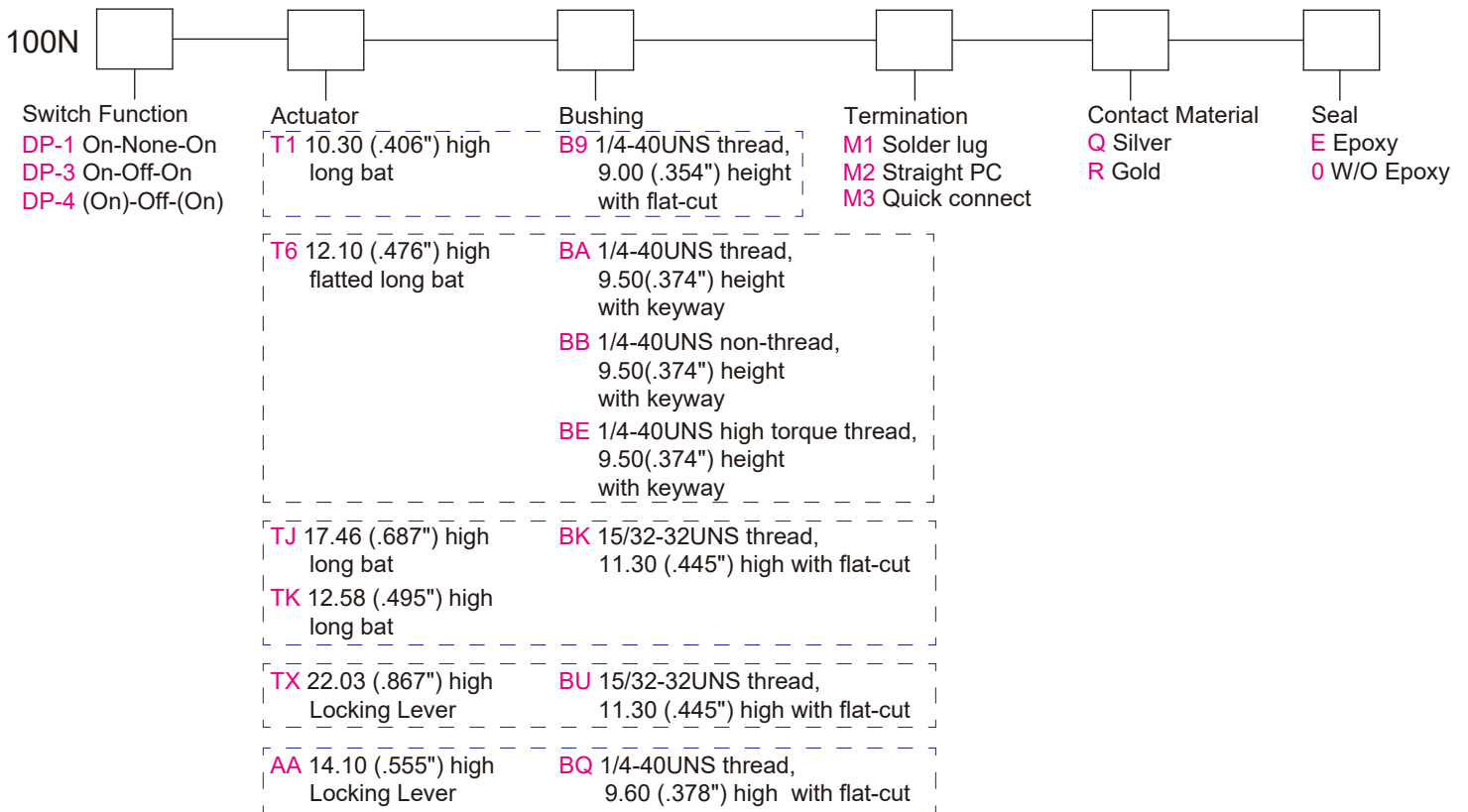
MATERIALS:

CASE: Diallyl phthalate(DAP)(UL 94V-0).  
 TOGGLE HANDLE: Brass, chrome plated.  
 BUSHING: Brass, nickel plated.  
 HOUSING: Stainless Steel.  
 TERMINAL SEAL: Epoxy.

Specifications and Dimensions subject to change

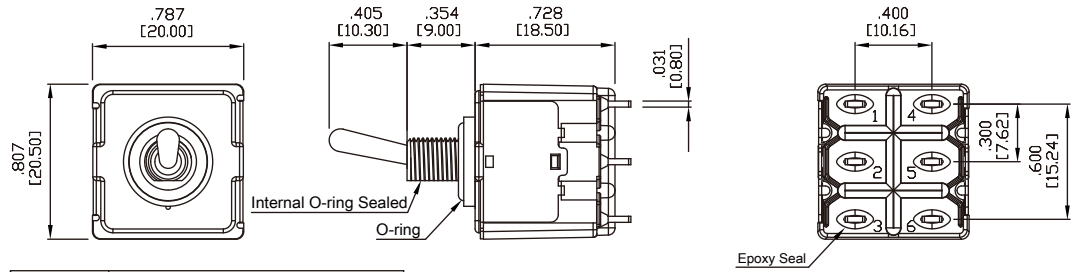
If your preferred product configuration is not shown, please contact our sales representative for custom design.

HOW TO ORDER SYSTEM



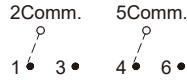
\*The dotted box represents only configuration for the specific Actuator and Bushing

## DPDT



Model No.	Switching Position		
DP-1	ON	NONE	ON
DP-3	ON	OFF	ON
DP-4	(ON)	OFF	(ON)
Term. Comm.	2-3,5-6	OPEN	2-1,5-4

### Schematic



## ACTUATOR OPTIONS

T1	TJ	TK	TX	AA
<p>.118 DIA [ø3.00]</p> <p>.405 [10.30]</p> <p>T1B9</p>	<p>.205 DIA [ø5.20]</p> <p>.687 [17.46]</p> <p>TJBK</p>	<p>.205 DIA [ø5.20]</p> <p>.495 [12.58]</p> <p>TKBK</p>	<p>.335 DIA [ø8.50]</p> <p>.867 [22.03]</p> <p>TXBU</p>	<p>.555 [14.10]</p> <p>AABQ</p>

## BUSHING OPTIONS

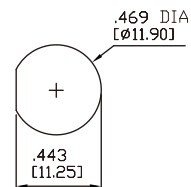
B9	BK	BQ	BU
<p>Flat Side</p> <p>.220 [5.60]</p> <p>ø.465 [ø11.80]</p> <p>1/4-40UNS</p> <p>.295 [7.50]</p> <p>.059 [1.50]</p>	<p>Flat Side</p> <p>ø.630 [ø16.00]</p> <p>.433 [11.00]</p> <p>15/32-32 UNS</p> <p>.386 [9.80]</p> <p>.059 [1.50]</p>	<p>1/4-40UNS</p> <p>.319 [8.10]</p> <p>.059 [1.50]</p>	<p>Flat Side</p> <p>ø.630 [ø16.00]</p> <p>.433 [11.00]</p> <p>15/32-32 UNS</p> <p>.386 [9.80]</p> <p>.059 [1.50]</p>

## PANEL MOUNTING

### 1/4 INCH BUSHING

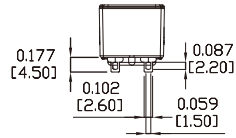


### 15/32 INCH BUSHING



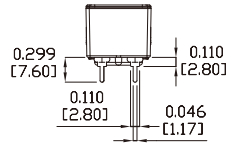
TERMINATION OPTIONS

M1 SOLDER LUG



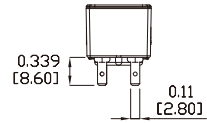
THK .031 [0.8]

M2 Straight PC



THK .031 [0.8]

M3 QUICK CONNECT



THK .031 [0.8]

CONTACT MATERIAL OPTIONS

Coding	Contact Material	Terminal Plating	Rating	Agency Approvals
Q	Silver <sup>1</sup>	Silver plated <sup>1</sup>	6Amps @ 250VAC 10Amps @ 125VAC 6Amps @ 48VDC	
R	Gold <sup>2</sup>	Gold plated <sup>4</sup>	0.4VA max @ 20V max (AC or DC)	

- 1. Movable Contact / Terminals: Copper alloy, silver plated.
- 2. Movable Contact: Copper alloy with gold plated over nickel plated.
- 4. Terminals: Copper alloy, with gold plated over nickel plated.